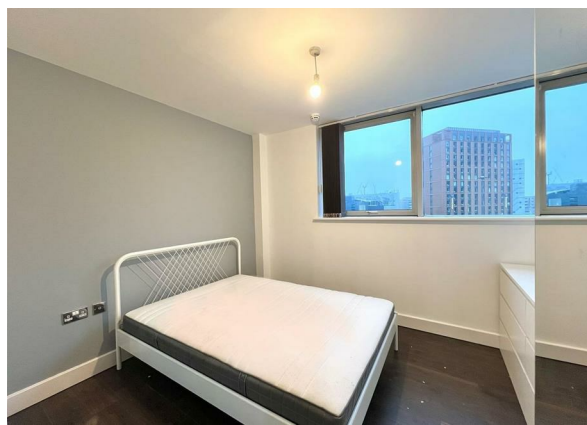
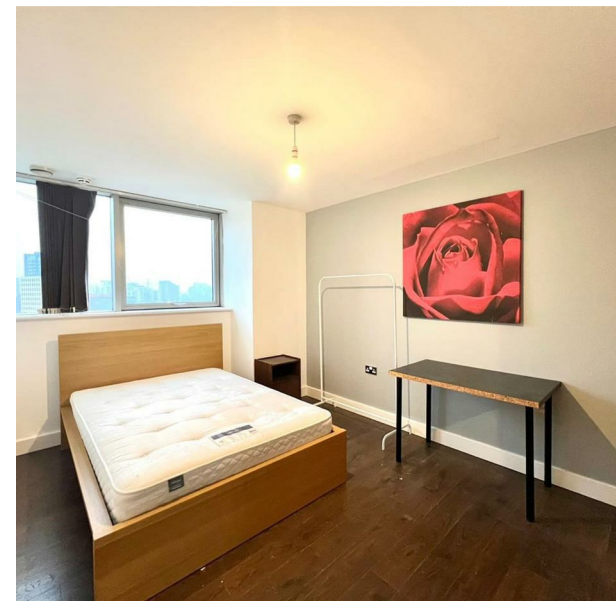


Flat 4 Blackwall Way, London, E14 9QS
£2,600 Per Month

COMPLETION
SALES & LETTINGS



A balcony with a metal railing and a small table with two chairs, overlooking a city skyline. The balcony is wet, suggesting it has recently rained. The city skyline in the background features various high-rise buildings, including a prominent red brick building on the left and a tall, thin tower on the right. The sky is overcast and grey.

Flat 4 Blackwall Way, London, E14 9QS

£2,600 Per Month

Council Tax Band:

Welcome to this stunning two-bedroom apartment located on Blackwall Way in the vibrant area of Canary Wharf, E14. Available to let at a competitive price of £2,600 per calendar month, this purpose-built flat offers a modern living experience in one of London's most sought-after locations.

Constructed in 2004, this new build property boasts contemporary design and high-quality finishes throughout. The apartment features two well-proportioned bedrooms, providing ample space for relaxation and rest. The open-plan living area is perfect for entertaining guests or enjoying quiet evenings at home, while large windows allow natural light to flood the space, creating a warm and inviting atmosphere.

Canary Wharf is renowned for its impressive skyline and offers a wealth of amenities, including shops, restaurants, and leisure facilities. With excellent transport links, residents can easily access the City of London and beyond, making this apartment an ideal choice for professionals and families alike.







337 Forest Road
 London
 E17 5JR
 02085277007
enquiries@completion.co.uk
completion.co.uk

